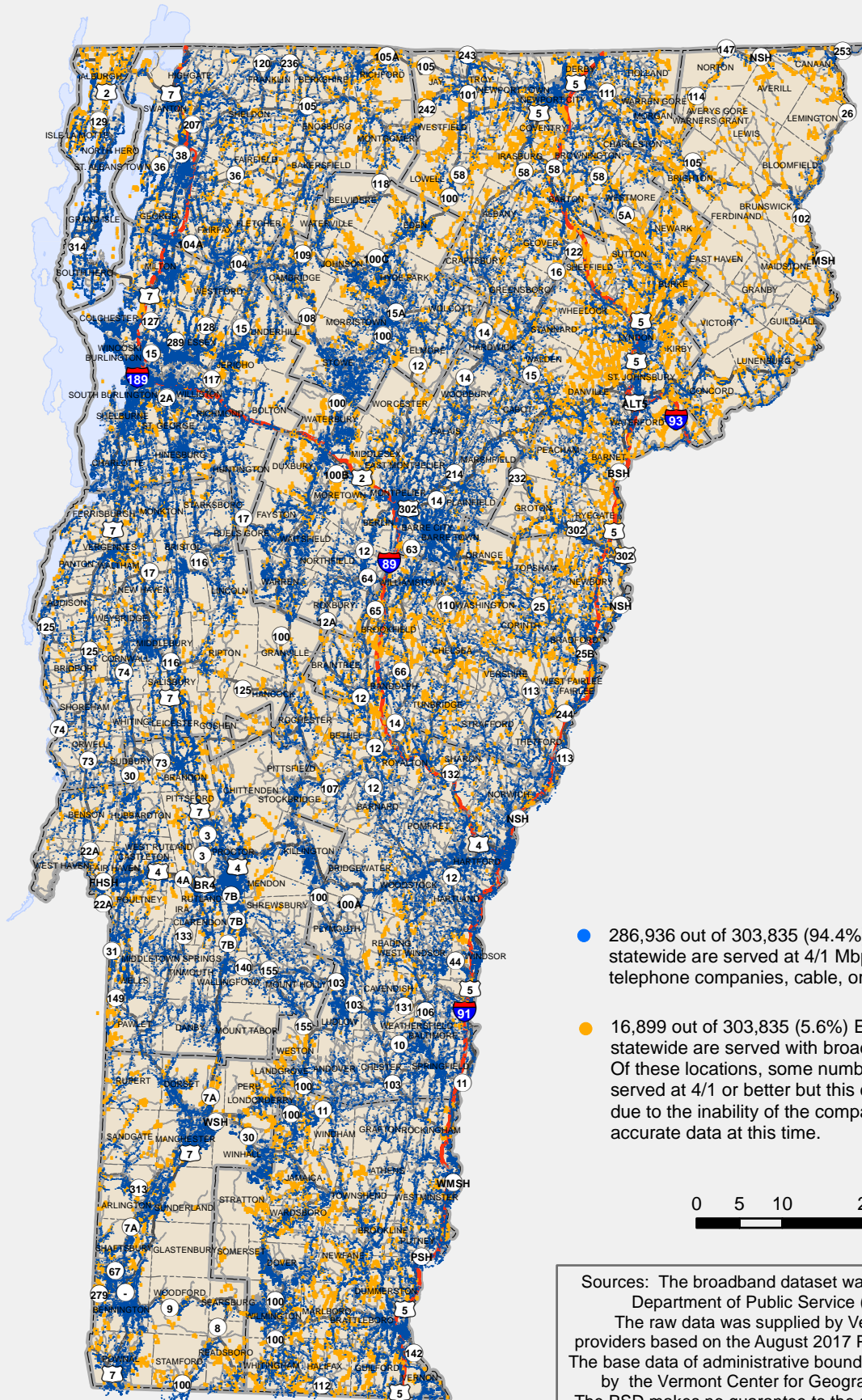


Broadband Statistics Summary by Town as of December 31, 2018

County	Town	Total Buildings	Served locations are affirmatively reported as served by specific providers								Locations are potentially served at 4	
			Served 100/100 or Better	Percent Served 100/100 or Better	Served 25/3 or Better	Percent Served 25/3 or Better	Served 10/1 or Better	Percent Served 10/1 or Better	Served 4/1 or Better	Percent Served 4/1 or Better	Underserved	Percent Underserved
ADDISON		17,661	1,509	8.5%	9,609	54.4%	10,627	60.2%	17,101	96.8%	560	3.2%
BENNINGTON		20,336	120	0.6%	16,420	80.7%	17,688	87.0%	19,268	94.7%	1,068	5.3%
CALEDONIA		15,754	16	0.1%	8,062	51.2%	10,249	65.1%	12,775	81.1%	2,979	18.9%
CHITTENDEN		56,836	11,672	20.5%	53,234	93.7%	53,620	94.3%	56,225	98.9%	611	1.1%
ESSEX		5,348	309	5.8%	1,163	21.7%	2,237	41.8%	3,807	71.2%	1,541	28.8%
FRANKLIN		22,252	535	2.4%	15,131	68.0%	17,357	78.0%	20,899	93.9%	1,353	6.1%
GRAND ISLE		6,168	0	0.0%	3,650	59.2%	4,536	73.5%	5,469	88.7%	699	11.3%
LAMOILLE		12,588	0	0.0%	6,238	49.6%	8,497	67.5%	11,869	94.3%	719	5.7%
ORANGE		15,394	4,481	29.1%	8,919	57.9%	10,394	67.5%	13,967	90.7%	1,427	9.3%
ORLEANS		16,350	85	0.5%	8,276	50.6%	10,396	63.6%	14,572	89.1%	1,778	10.9%
RUTLAND		30,585	6,646	21.7%	27,369	89.5%	27,662	90.4%	29,839	97.6%	746	2.4%
WASHINGTON		26,475	1,147	4.3%	18,481	69.8%	19,975	75.4%	25,722	97.2%	753	2.8%
WINDHAM		26,666	2,319	8.7%	19,462	73.0%	21,791	81.7%	24,632	92.4%	2,034	7.6%
WINDSOR		31,422	12,792	40.7%	27,021	86.0%	28,125	89.5%	30,791	98.0%	631	2.0%
TOTALS		303,835	41,631	13.7%	223,035	73.4%	243,154	80.0%	286,936	94.4%	16,899	5.6%

Broadband Availability by E911 Building Location 4 Mbps Down / 1 Mbps Up or Better

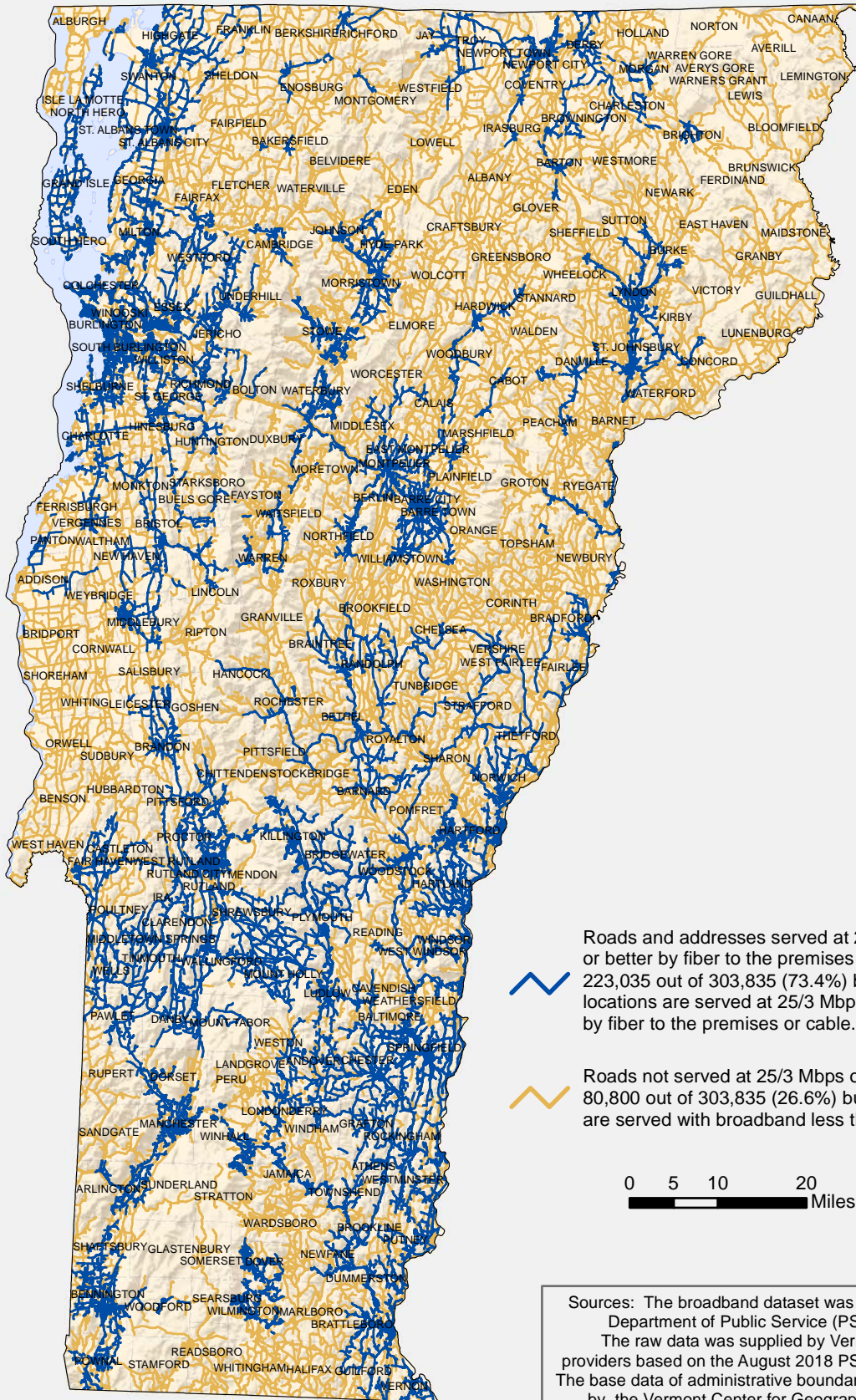


- 286,936 out of 303,835 (94.4%) E911 building locations statewide are served at 4/1 Mbps or better by independent telephone companies, cable, or fiber to the premises.
- 16,899 out of 303,835 (5.6%) E911 building locations statewide are served with broadband less than 4/1 Mbps. Of these locations, some number are already served at 4/1 or better but this cannot be verified due to the inability of the companies to provide accurate data at this time.



Sources: The broadband dataset was prepared by the Vermont Department of Public Service (PSD) on 1/3/2018. The raw data was supplied by Vermont internet service providers based on the August 2017 PSD request for information. The base data of administrative boundaries and roads are supplied by the Vermont Center for Geographic Information (VCGI). The PSD makes no guarantee to the accuracy of this information.

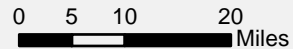
Broadband Availability by Road Segment 25 Mbps Down / 3 Mbps Up or Better



Roads and addresses served at 25/3 Mbps or better by fiber to the premises or cable.
223,035 out of 303,835 (73.4%) building locations are served at 25/3 Mbps or better by fiber to the premises or cable.



Roads not served at 25/3 Mbps or better.
80,800 out of 303,835 (26.6%) building locations are served with broadband less than 25/3.



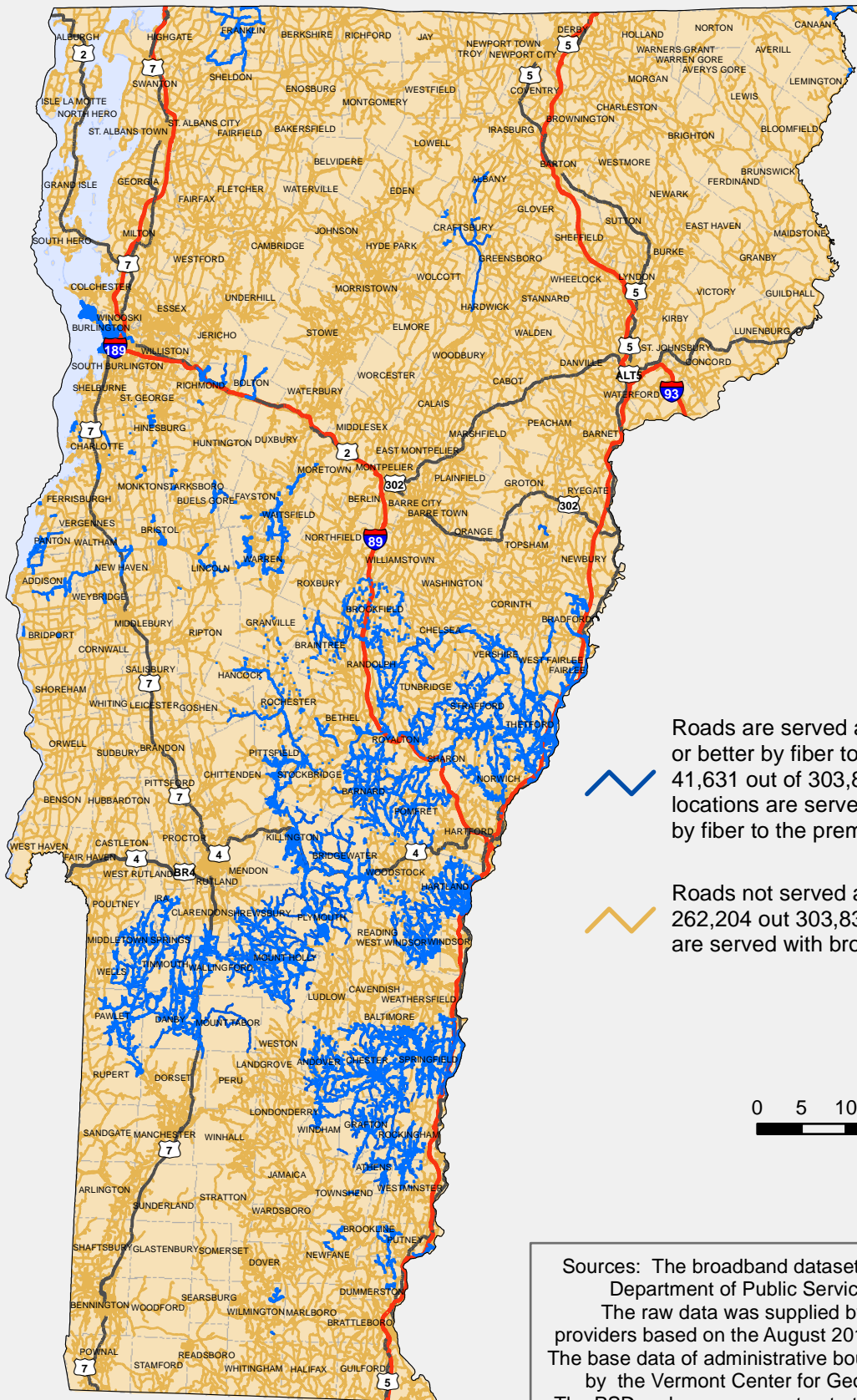
Sources: The broadband dataset was prepared by the Vermont Department of Public Service (PSD) on 12/31/2018. The raw data was supplied by Vermont internet service providers based on the August 2018 PSD request for information. The base data of administrative boundaries and roads are supplied by the Vermont Center for Geographic Information (VCGI). The PSD makes no guarantee to the accuracy of this information.


Broadband Availability by Road Segment 100 Mbps Down / 100 Mbps Up or Better




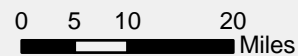
Department of Public Service

December 31, 2018



 Roads are served at 100/100 Mbps or better by fiber to the premises or cable. 41,631 out of 303,835 (13.7%) building locations are served at 100/100 Mbps or better by fiber to the premises or cable.

 Roads not served at 100/100 Mbps or better. 262,204 out of 303,835 (86.3%) building locations are served with broadband less than 100/100.



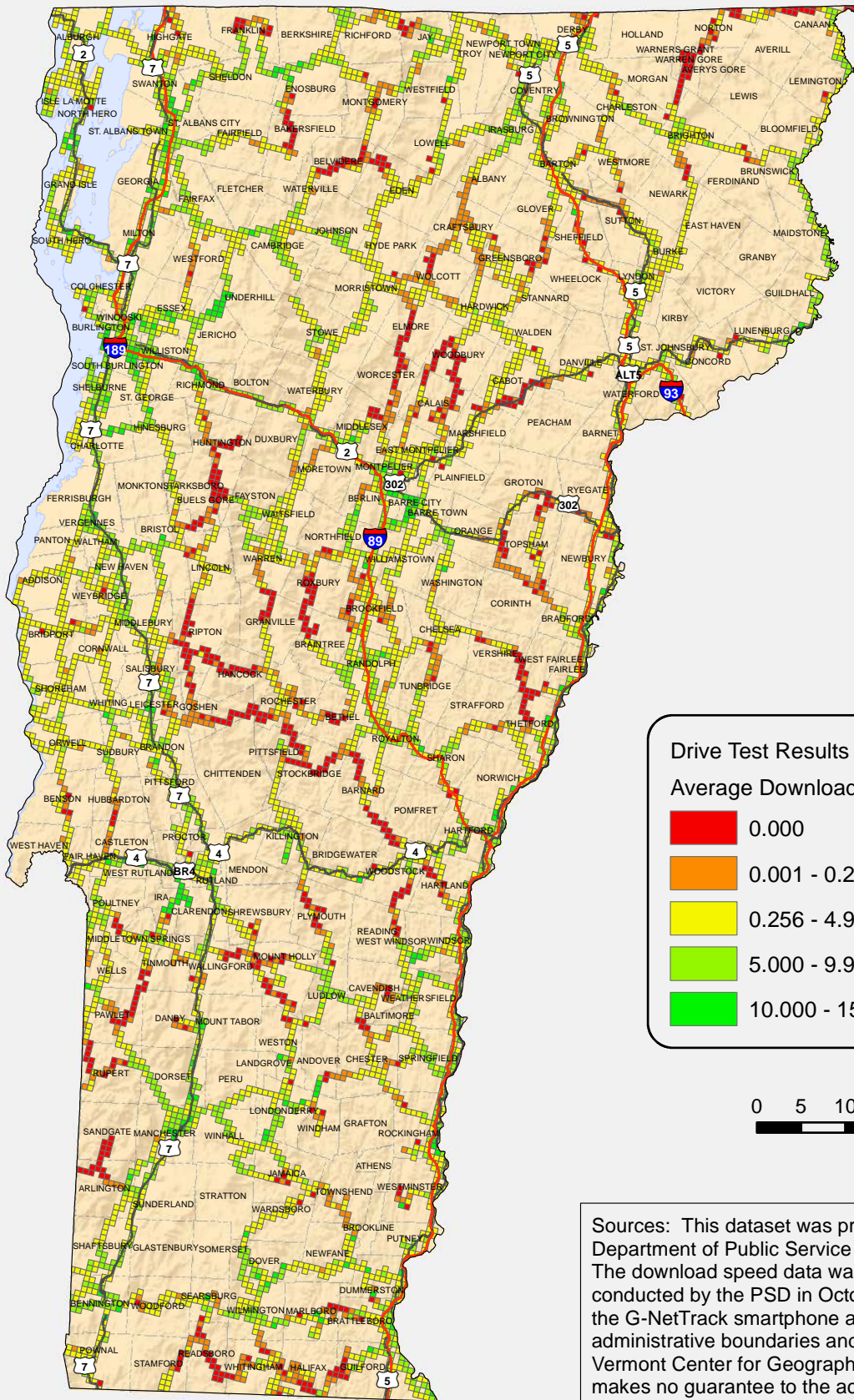
Sources: The broadband dataset was prepared by the Vermont Department of Public Service (PSD) on 12/31/2018. The raw data was supplied by Vermont internet service providers based on the August 2018 PSD request for information. The base data of administrative boundaries and roads are supplied by the Vermont Center for Geographic Information (VCGI). The PSD makes no guarantee to the accuracy of this information.

Mobile Wireless in Vermont All Carriers 4G-LTE Data Coverage



Department of Public Service

December 31, 2018



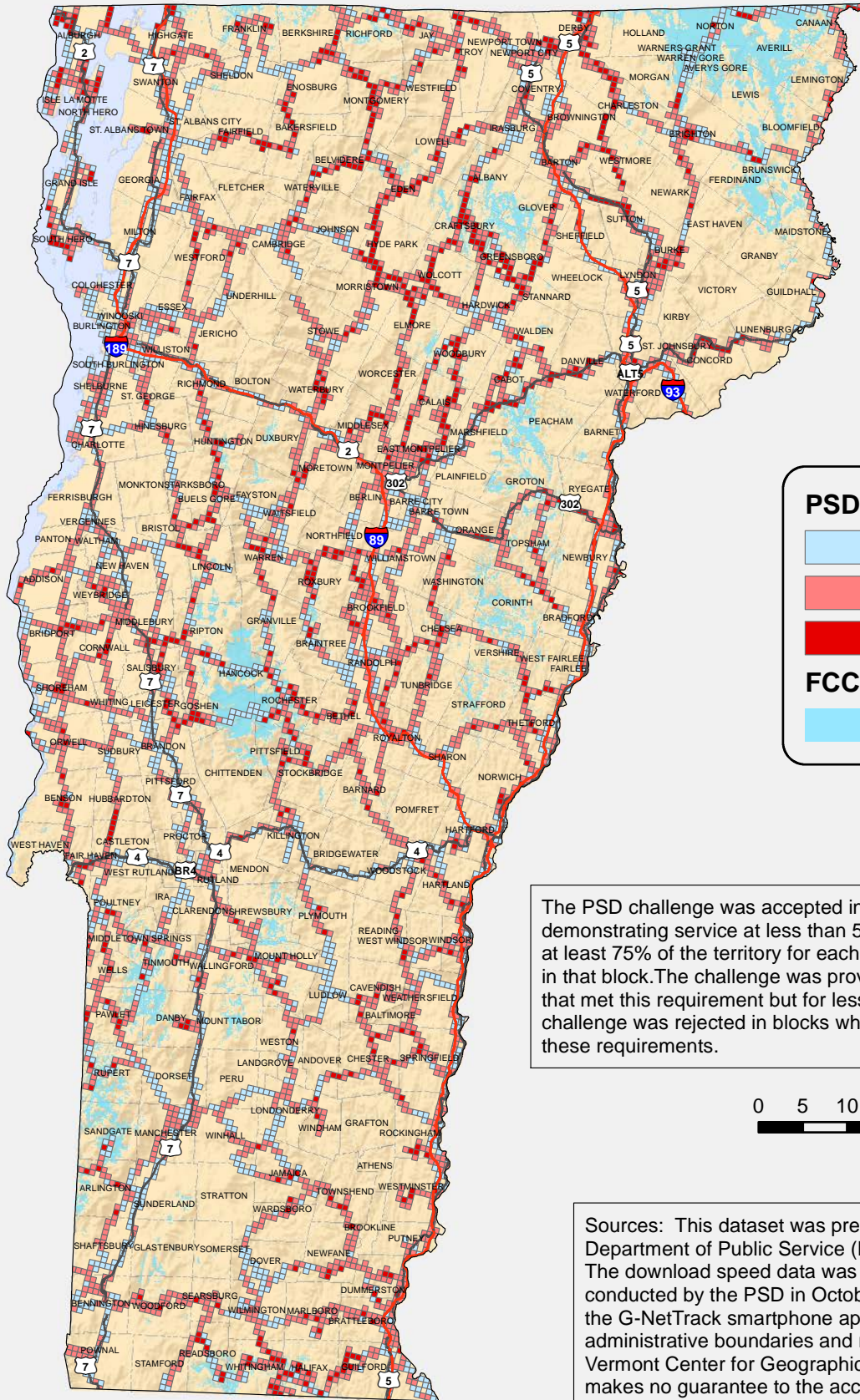
Drive Test Results
Average Download Speed (Mbps)

■	0.000
■	0.001 - 0.255
■	0.256 - 4.999
■	5.000 - 9.999
■	10.000 - 150.000



Sources: This dataset was prepared by the Vermont Department of Public Service (PSD) on 12/31/2018. The download speed data was collected during a drive test conducted by the PSD in October and November 2018 using the G-NetTrack smartphone application. The base data of administrative boundaries and roads are supplied by the Vermont Center for Geographic Information (VCGI). The PSD makes no guarantee to the accuracy of this information.

Mobile Wireless in Vermont Mobility Fund 4G-LTE Data Challenge



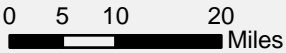
PSD Challenge Blocks

- Rejected (1,879)
- Provisional (3,397)
- Accepted (789)

FCC Mobility Fund

- Initial Eligible Area

The PSD challenge was accepted in blocks where results demonstrating service at less than 5 Mbps were submitted for at least 75% of the territory for each carrier that asserted service in that block. The challenge was provisionally accepted for blocks that met this requirement but for less than 75% of the area. The challenge was rejected in blocks where the tests did not meet these requirements.



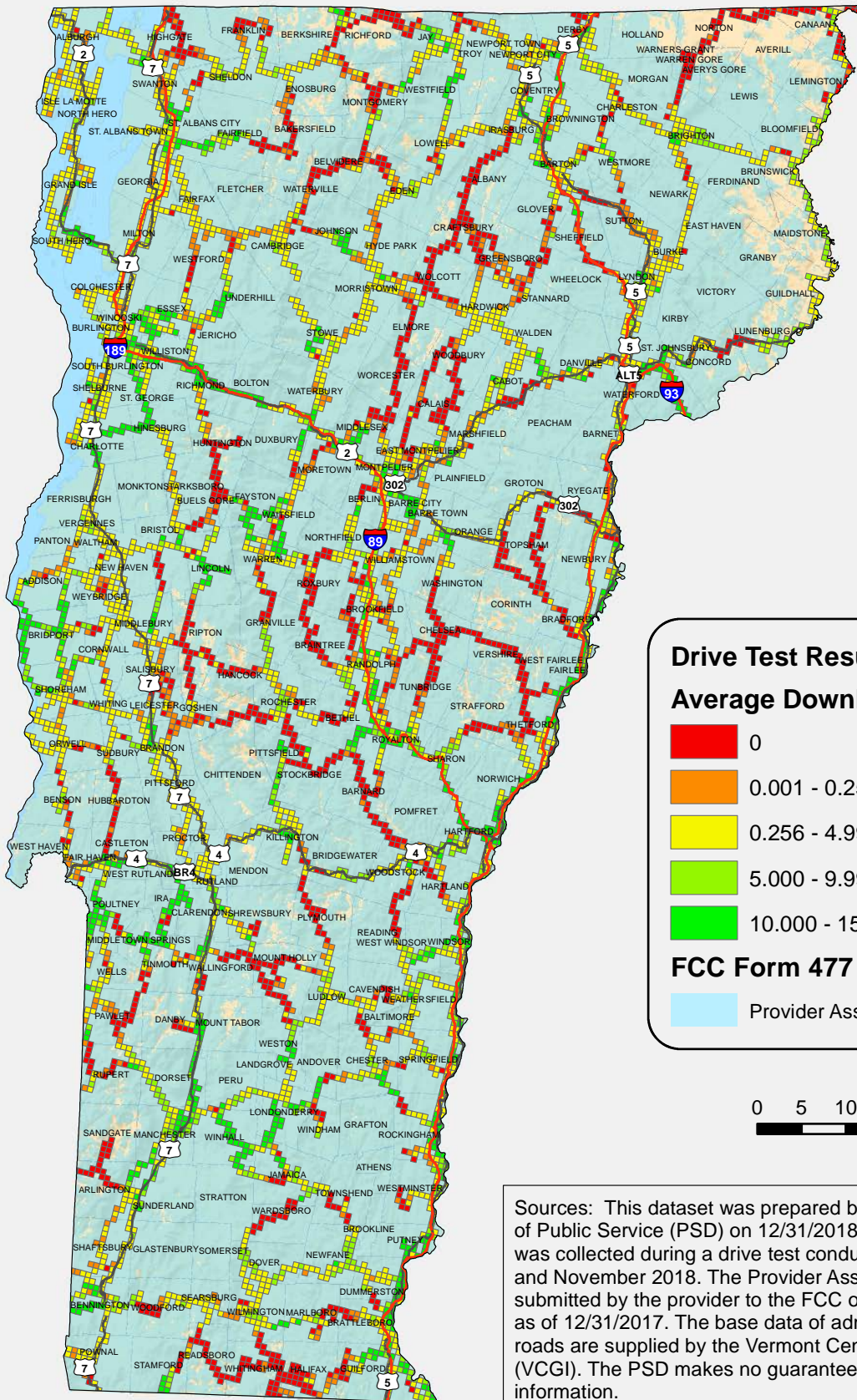
Sources: This dataset was prepared by the Vermont Department of Public Service (PSD) on 12/31/2018. The download speed data was collected during a drive test conducted by the PSD in October and November 2018 using the G-NetTrack smartphone application. The base data of administrative boundaries and roads are supplied by the Vermont Center for Geographic Information (VCGI). The PSD makes no guarantee to the accuracy of this information.

Mobile Wireless in Vermont AT&T 4G-LTE Data Coverage



Department of Public Service

December 31, 2018

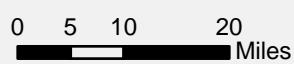


Drive Test Results
Average Download Speed (Mbps)

- 0
- 0.001 - 0.255
- 0.256 - 4.999
- 5.000 - 9.999
- 10.000 - 150.000

FCC Form 477

- Provider Asserted Coverage



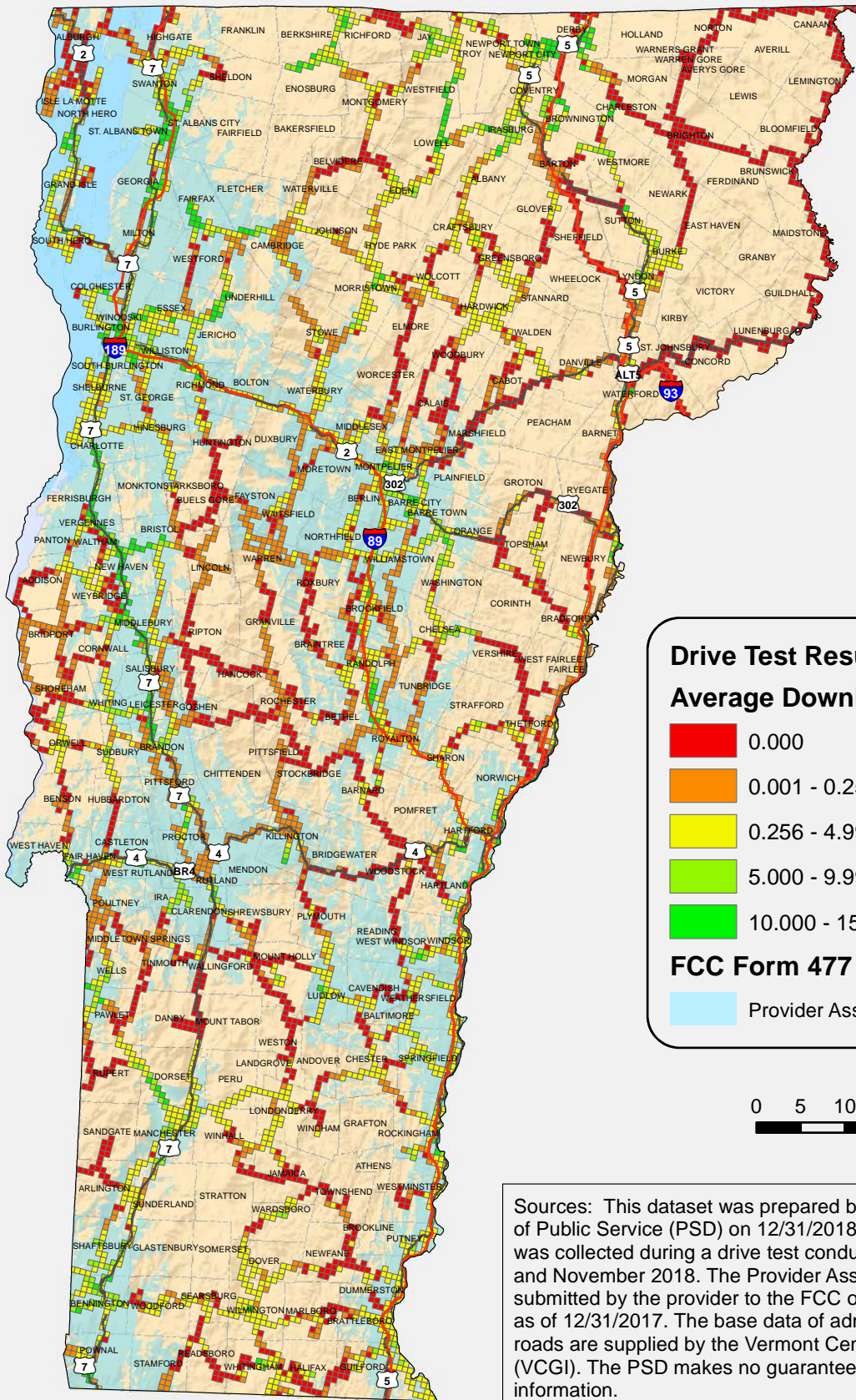
Sources: This dataset was prepared by the Vermont Department of Public Service (PSD) on 12/31/2018. The download speed data was collected during a drive test conducted by the PSD in October and November 2018. The Provider Asserted Coverage area was submitted by the provider to the FCC on form 477 showing service as of 12/31/2017. The base data of administrative boundaries and roads are supplied by the Vermont Center for Geographic Information (VCGI). The PSD makes no guarantee to the accuracy of this information.

Mobile Wireless in Vermont Sprint 4G-LTE Data Coverage



Department of Public Service

December 31, 2018

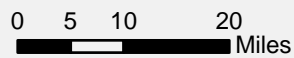


Drive Test Results
Average Download Speed (Mbps)

- 0.000
- 0.001 - 0.255
- 0.256 - 4.999
- 5.000 - 9.999
- 10.000 - 150.000

FCC Form 477

- Provider Asserted Coverage



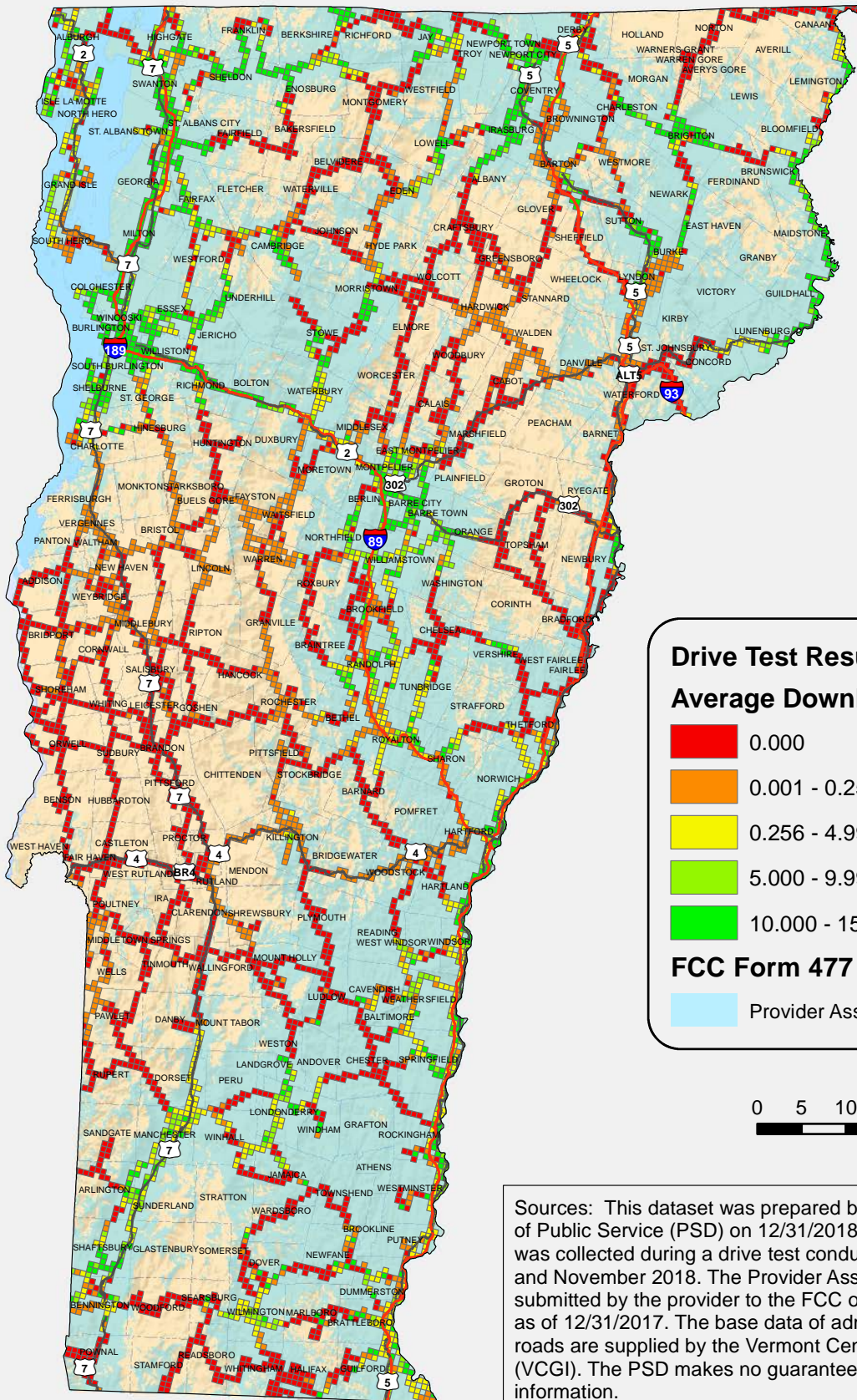
Sources: This dataset was prepared by the Vermont Department of Public Service (PSD) on 12/31/2018. The download speed data was collected during a drive test conducted by the PSD in October and November 2018. The Provider Asserted Coverage area was submitted by the provider to the FCC on form 477 showing service as of 12/31/2017. The base data of administrative boundaries and roads are supplied by the Vermont Center for Geographic Information (VCGI). The PSD makes no guarantee to the accuracy of this information.

Mobile Wireless in Vermont T-Mobile 4G-LTE Data Coverage



Department of Public Service

December 31, 2018

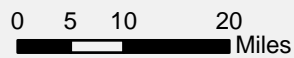


Drive Test Results
Average Download Speed (Mbps)

- 0.000
- 0.001 - 0.255
- 0.256 - 4.999
- 5.000 - 9.999
- 10.000 - 150.000

FCC Form 477

- Provider Asserted Coverage



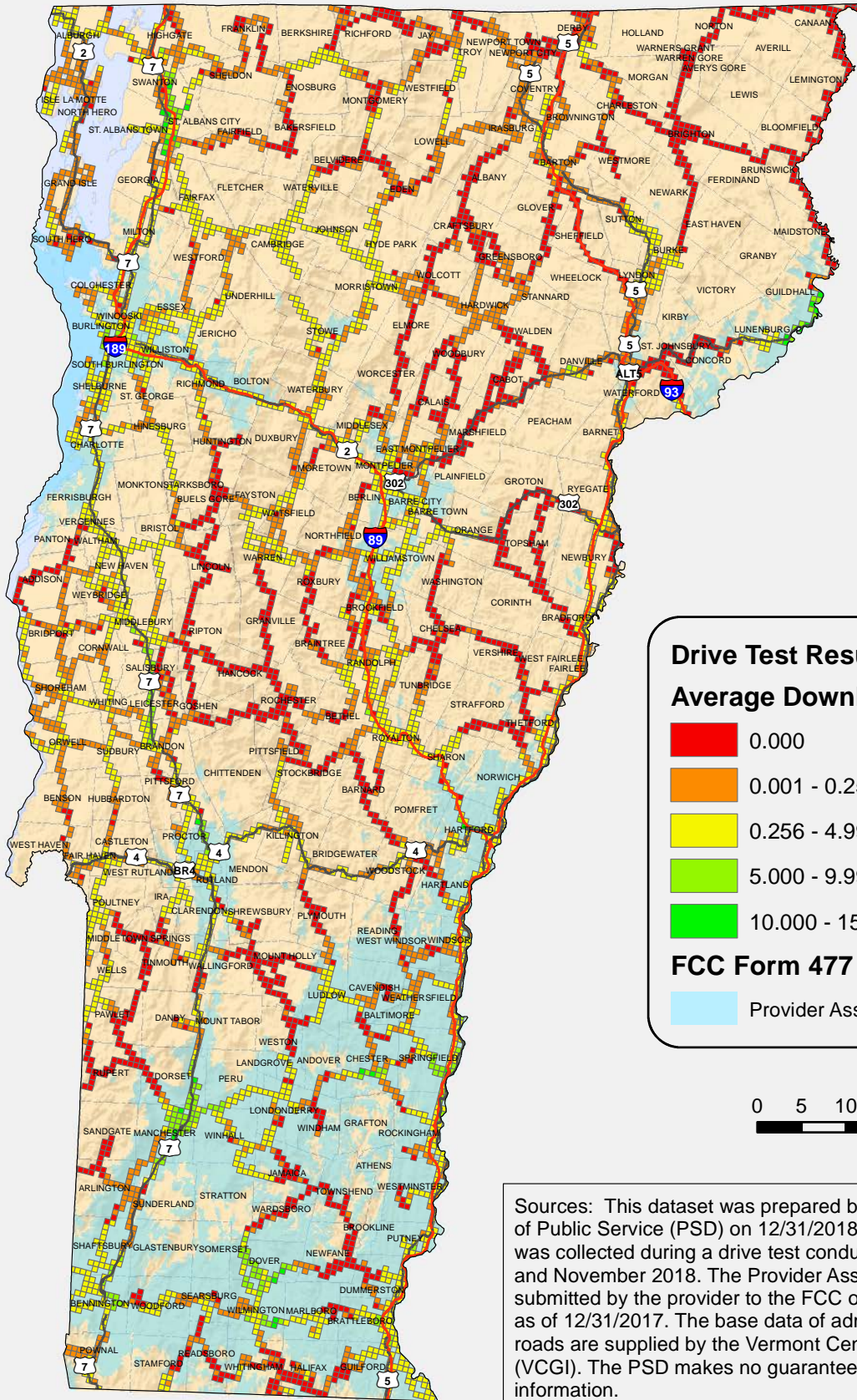
Sources: This dataset was prepared by the Vermont Department of Public Service (PSD) on 12/31/2018. The download speed data was collected during a drive test conducted by the PSD in October and November 2018. The Provider Asserted Coverage area was submitted by the provider to the FCC on form 477 showing service as of 12/31/2017. The base data of administrative boundaries and roads are supplied by the Vermont Center for Geographic Information (VCGI). The PSD makes no guarantee to the accuracy of this information.

Mobile Wireless in Vermont US Cellular 4G-LTE Data Coverage



Department of Public Service

December 31, 2018

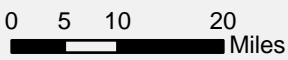


Drive Test Results
Average Download Speed (Mbps)

- 0.000
- 0.001 - 0.255
- 0.256 - 4.999
- 5.000 - 9.999
- 10.000 - 150.000

FCC Form 477

- Provider Asserted Coverage



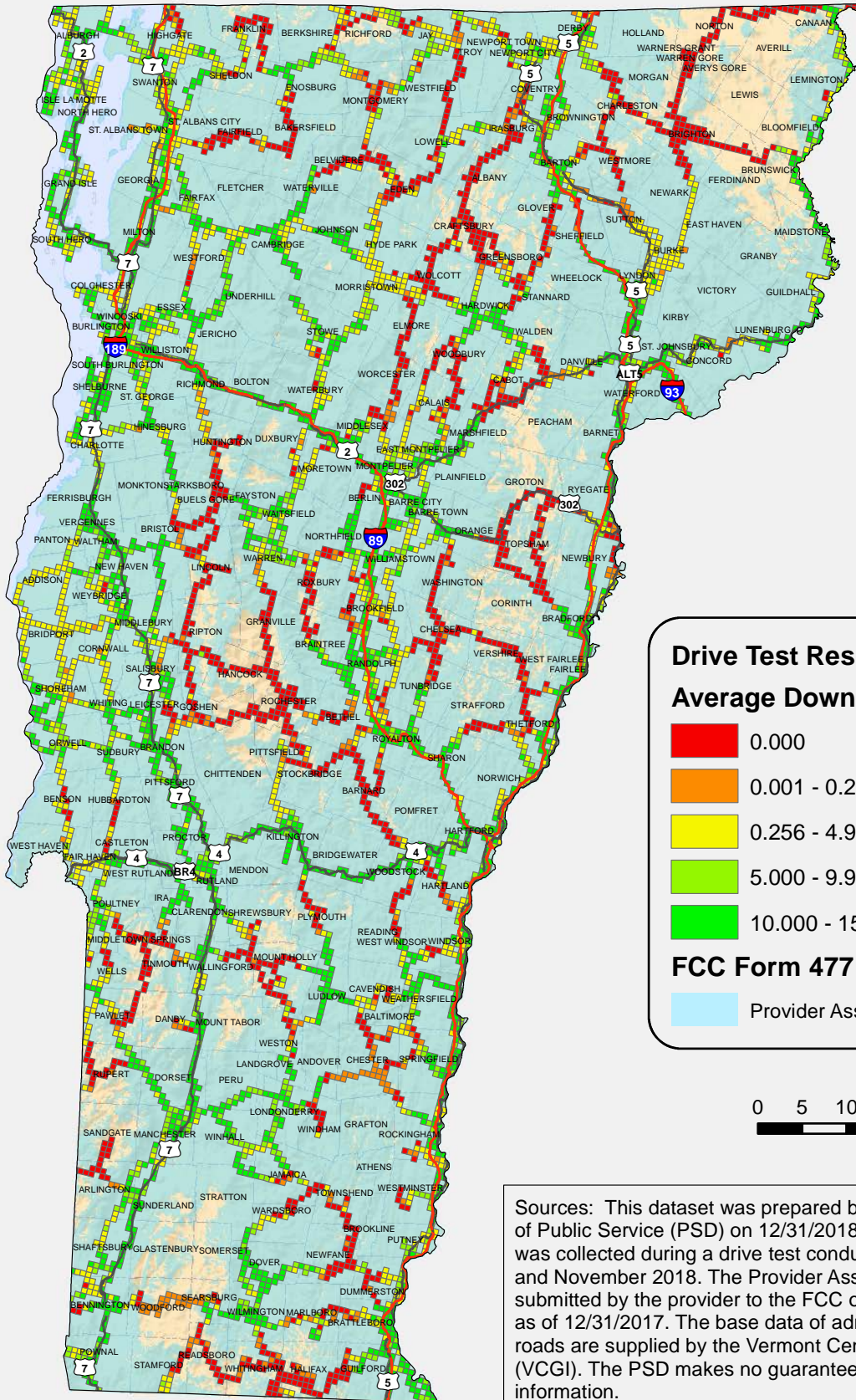
Sources: This dataset was prepared by the Vermont Department of Public Service (PSD) on 12/31/2018. The download speed data was collected during a drive test conducted by the PSD in October and November 2018. The Provider Asserted Coverage area was submitted by the provider to the FCC on form 477 showing service as of 12/31/2017. The base data of administrative boundaries and roads are supplied by the Vermont Center for Geographic Information (VCGI). The PSD makes no guarantee to the accuracy of this information.

Mobile Wireless in Vermont Verizon 4G-LTE Data Coverage



Department of Public Service

December 31, 2018

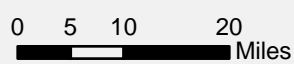


Drive Test Results
Average Download Speed (Mbps)

- 0.000
- 0.001 - 0.255
- 0.256 - 4.999
- 5.000 - 9.999
- 10.000 - 150.000

FCC Form 477

- Provider Asserted Coverage



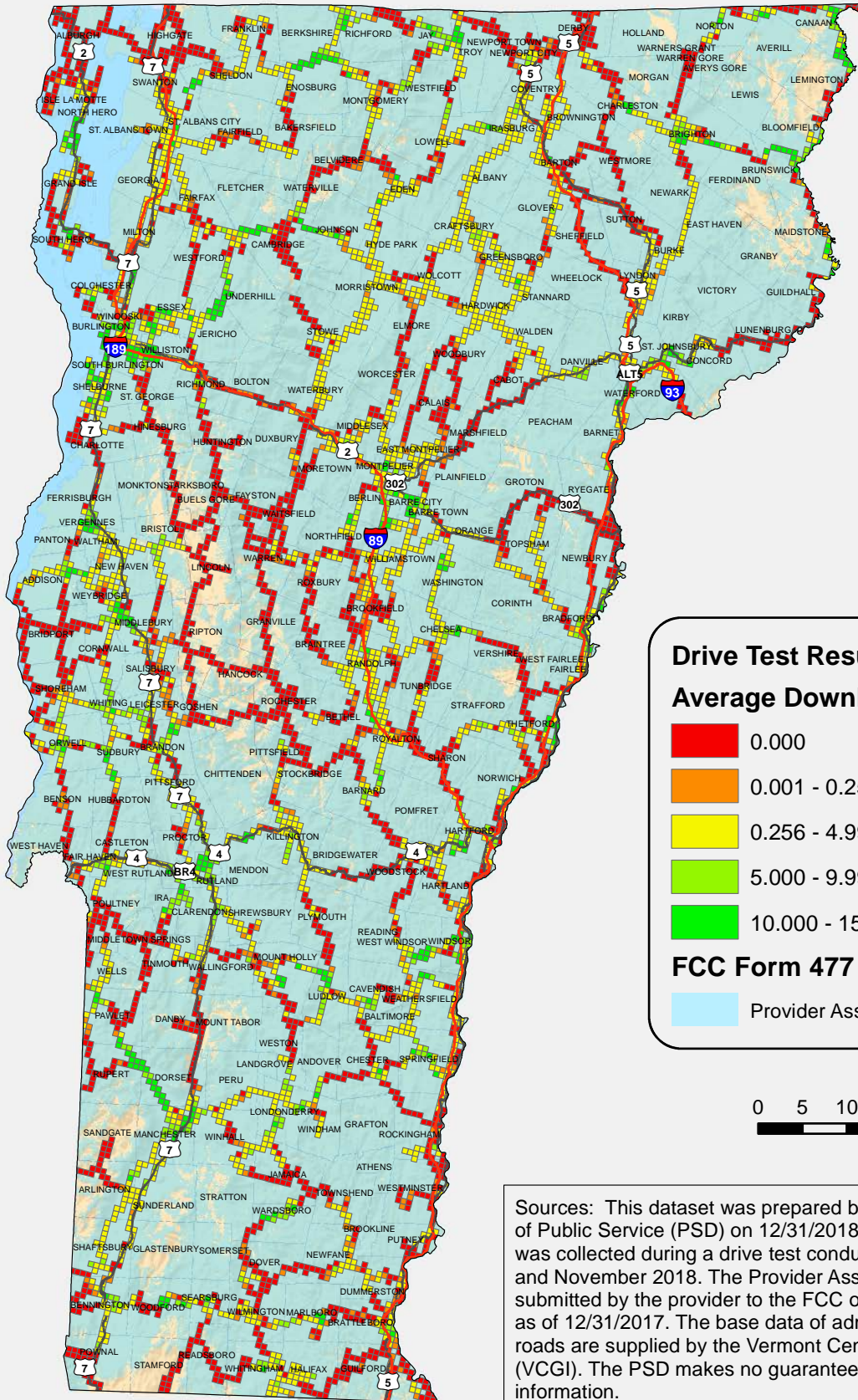
Sources: This dataset was prepared by the Vermont Department of Public Service (PSD) on 12/31/2018. The download speed data was collected during a drive test conducted by the PSD in October and November 2018. The Provider Asserted Coverage area was submitted by the provider to the FCC on form 477 showing service as of 12/31/2017. The base data of administrative boundaries and roads are supplied by the Vermont Center for Geographic Information (VCGI). The PSD makes no guarantee to the accuracy of this information.

Mobile Wireless in Vermont VTel Wireless 4G-LTE Data Coverage



Department of Public Service

December 31, 2018



Drive Test Results
Average Download Speed (Mbps)

- 0.000
- 0.001 - 0.255
- 0.256 - 4.999
- 5.000 - 9.999
- 10.000 - 150.000

FCC Form 477

- Provider Asserted Coverage



Sources: This dataset was prepared by the Vermont Department of Public Service (PSD) on 12/31/2018. The download speed data was collected during a drive test conducted by the PSD in October and November 2018. The Provider Asserted Coverage area was submitted by the provider to the FCC on form 477 showing service as of 12/31/2017. The base data of administrative boundaries and roads are supplied by the Vermont Center for Geographic Information (VCGI). The PSD makes no guarantee to the accuracy of this information.